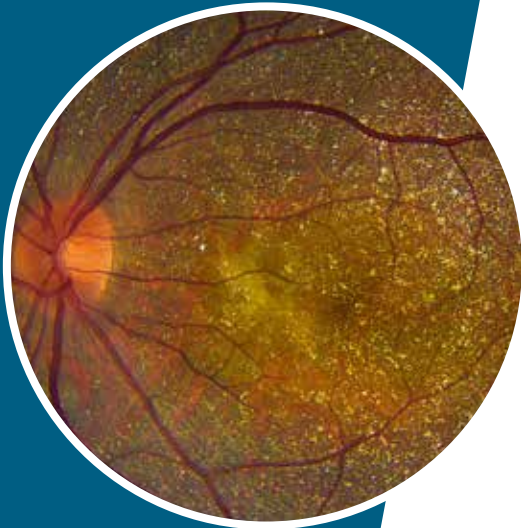


Bietti's Crystalline Dystrophy (BCD)

An often-misdiagnosed blinding disease



How to Spot BCD?

Small yellow-white crystals are visible in the retina (see left image)



Crystals may not be obvious in early or late stages, but near-infrared imaging can enhance the detection of crystals



BCD is often misdiagnosed as RP or Stargardt disease. Use CYP4V2 gene test to diagnose or confirm BCD

Symptoms



Night blindness, distorted vision, photophobia



Impaired Visual Field & Visual Acuity

Potential treatments are currently being developed
Learn more about BCD and the patient-driven nonprofit

www.InvincibleVision.org

Invincible Vision
Finding a Cure for BCD
501(c)(3) nonprofit